

PLATINIUM VACANT PREMISES SUMMARY



PLATINIUM

PLATINIUM 1

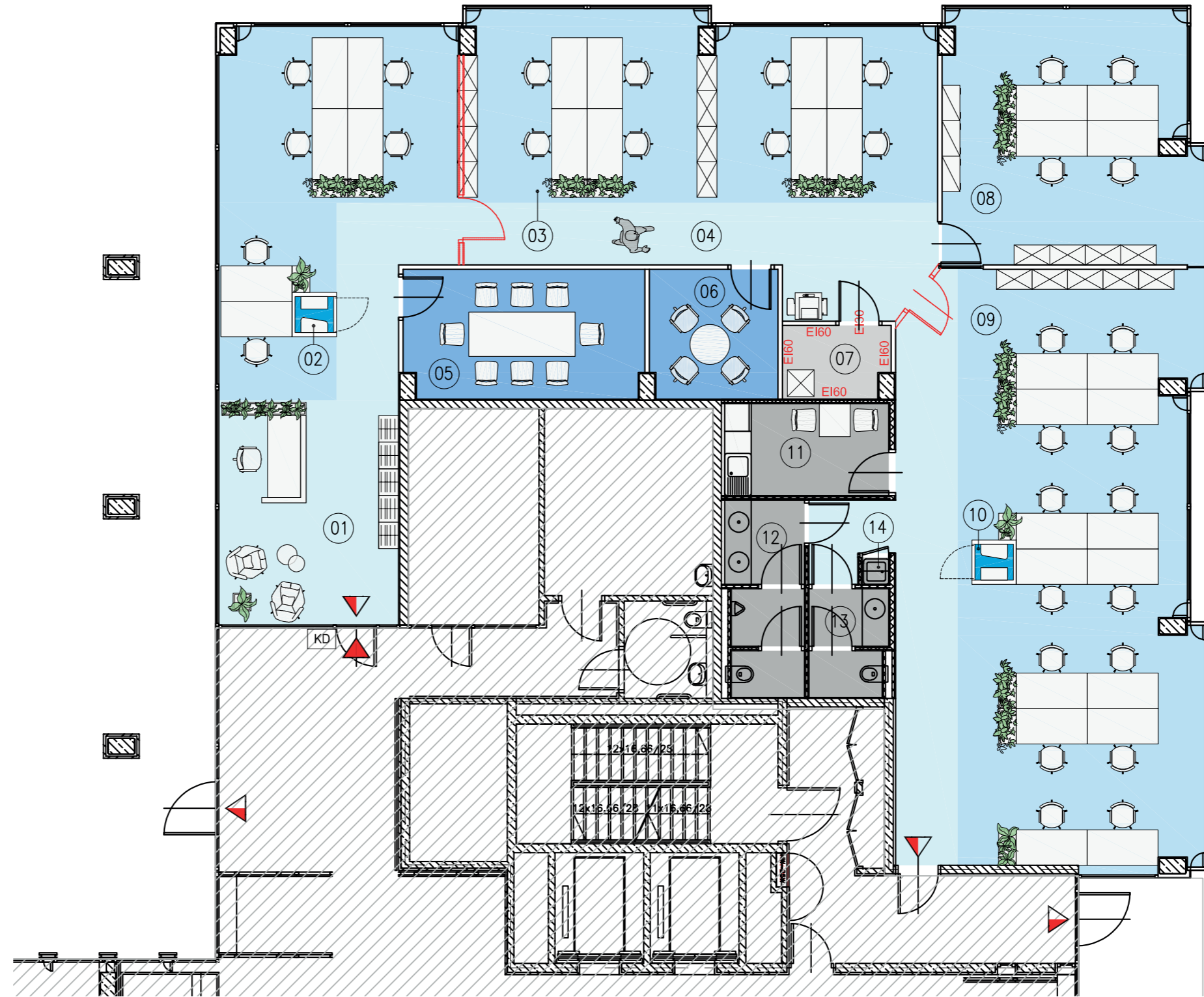
GF

322 M²

Total area gross

306,7 M²

Total area net



PLATINIUM 1

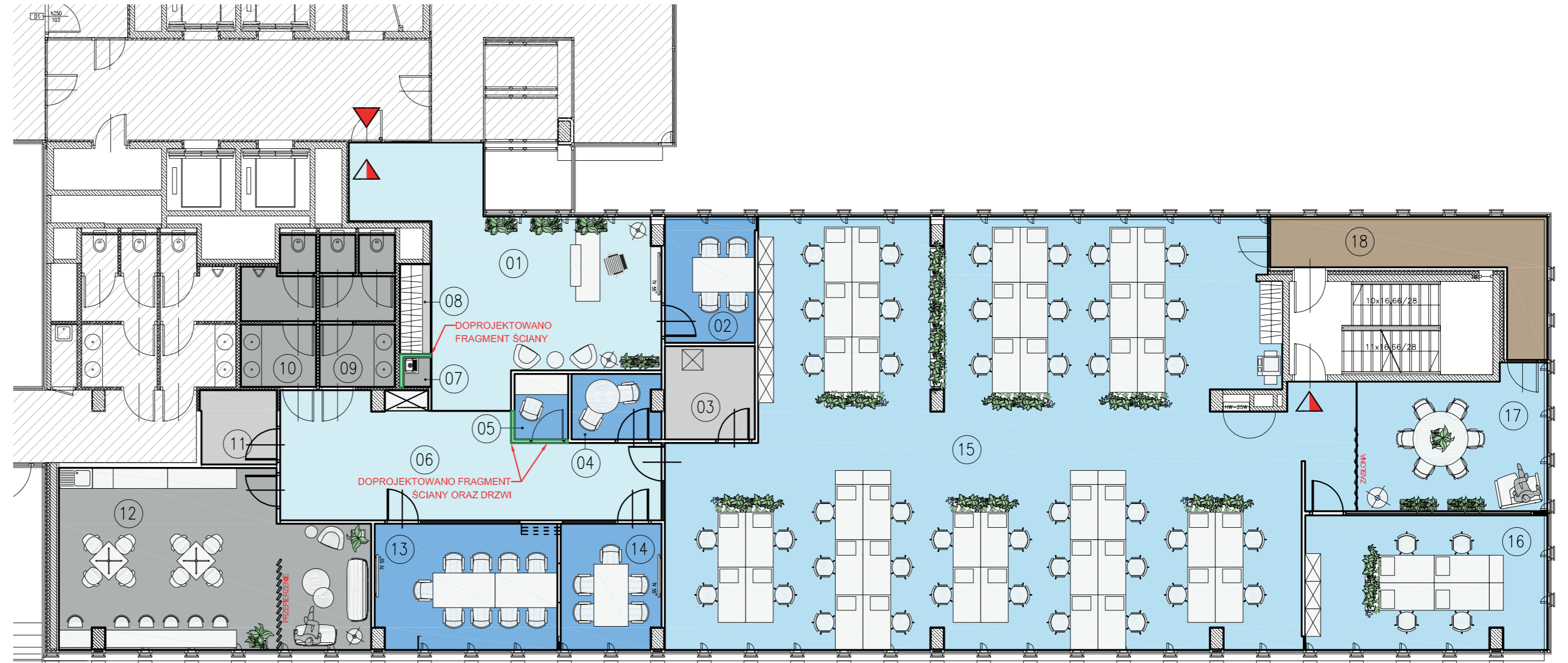
FLOOR 1

514,50 M²

Total area gross

490 M²

Total area net



PLATINIUM

PLATINIUM 1

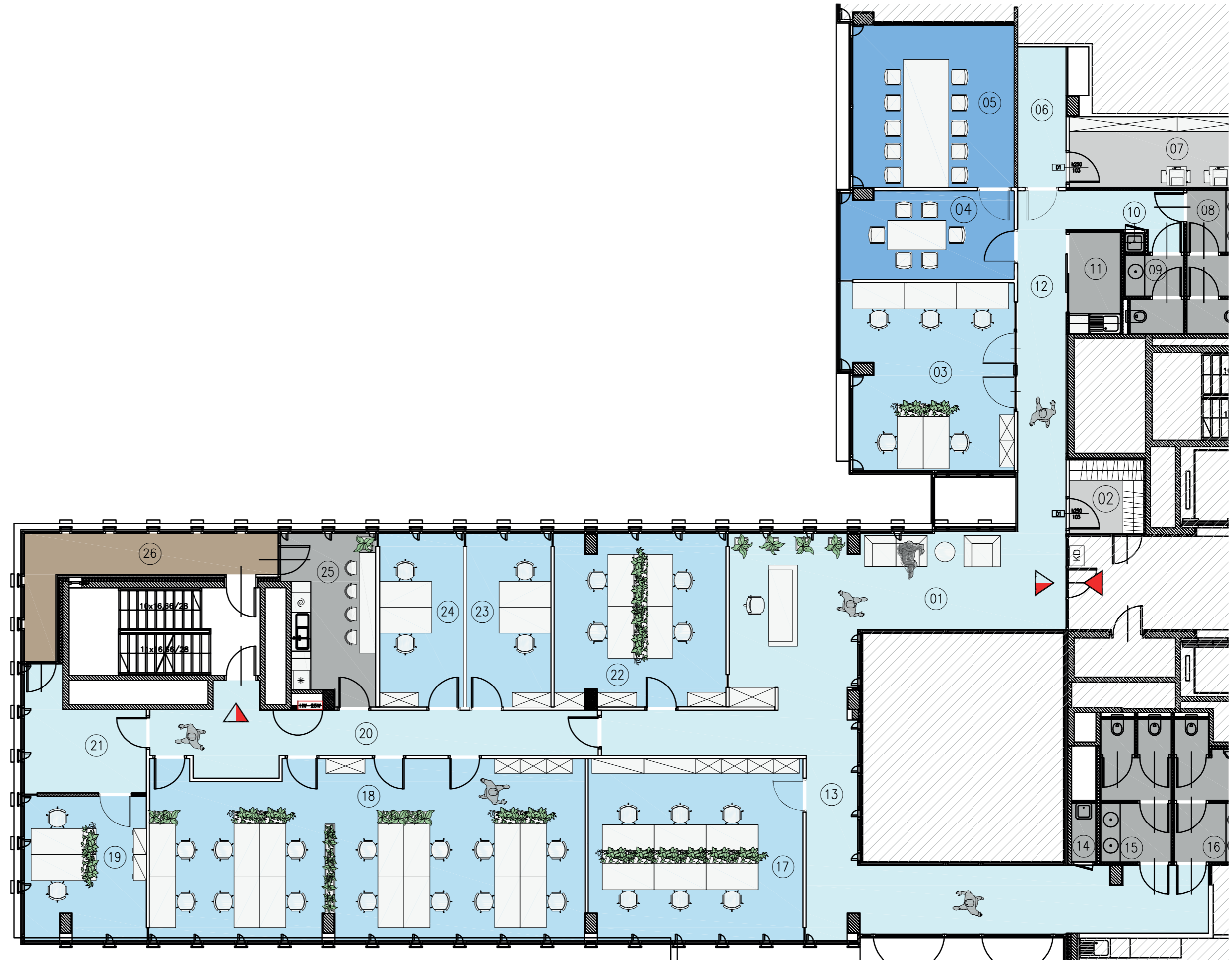
FLOOR 1

608,2 M²

Total area gross

579,3 M²

Total area net



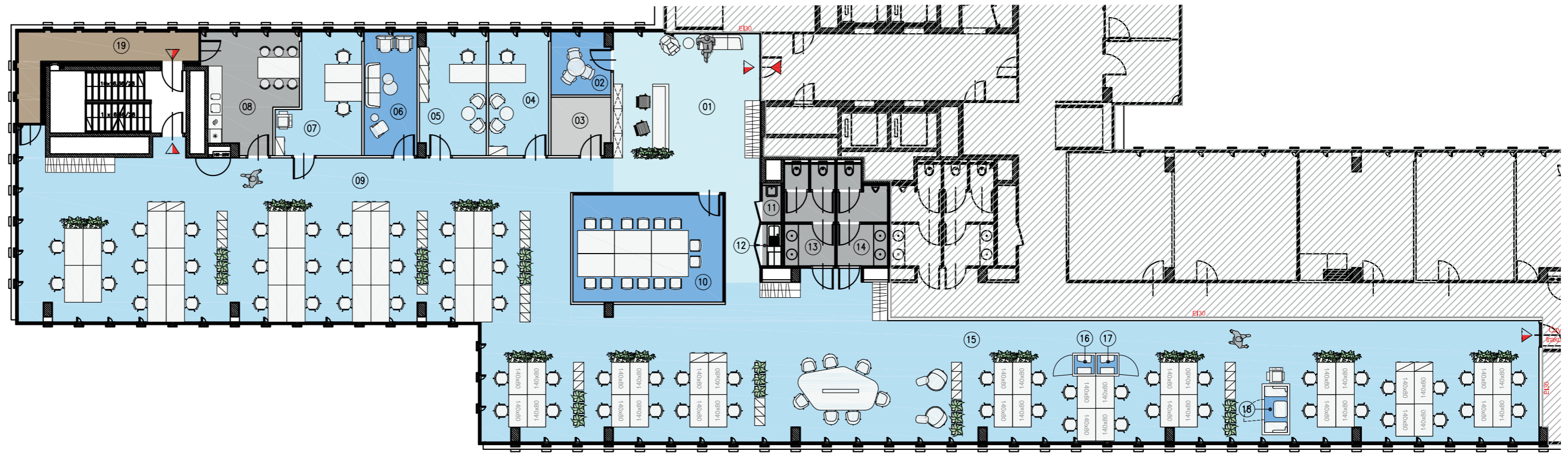
PLATINIUM

PLATINIUM 1

FLOOR 5

690,4 M²
Total area gross

657,5 M²
Total area net



PLATINIUM 2

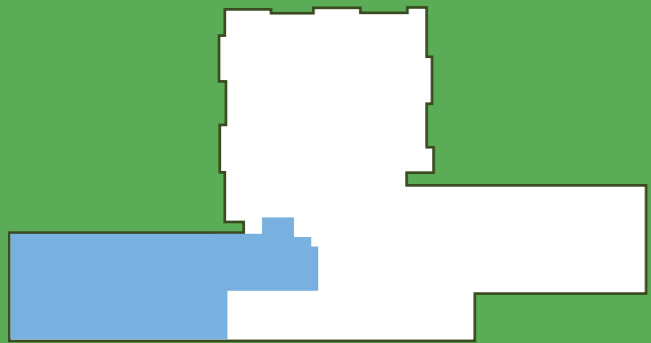
FLOOR 1

413,6 M²

Total area gross

393,4 M²

Total area net



PLATINIUM

PLATINIUM 2

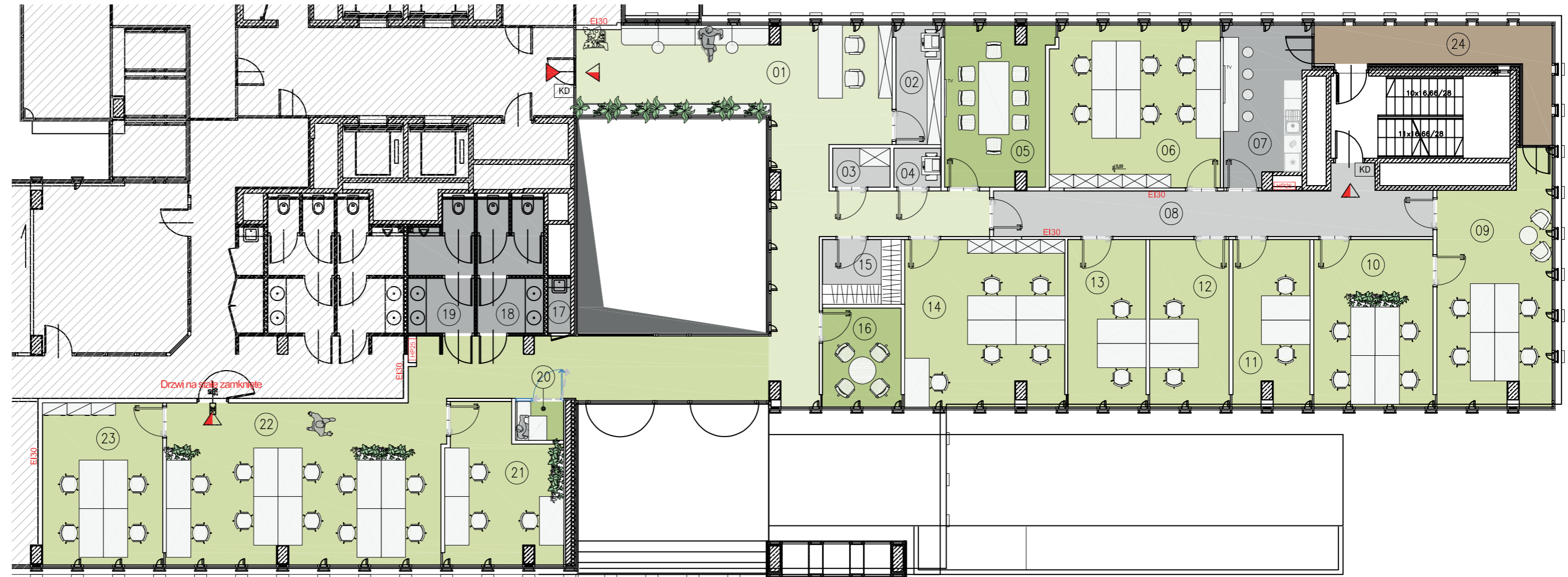
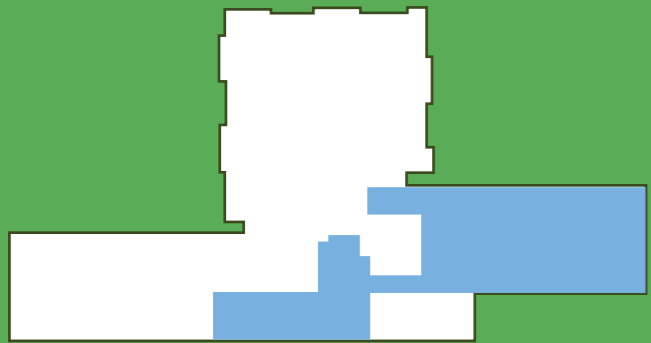
FLOOR 1

477,7 M²

Total area gross

455 M²

Total area net



PLATINIUM

PLATINIUM 2

FLOOR 3

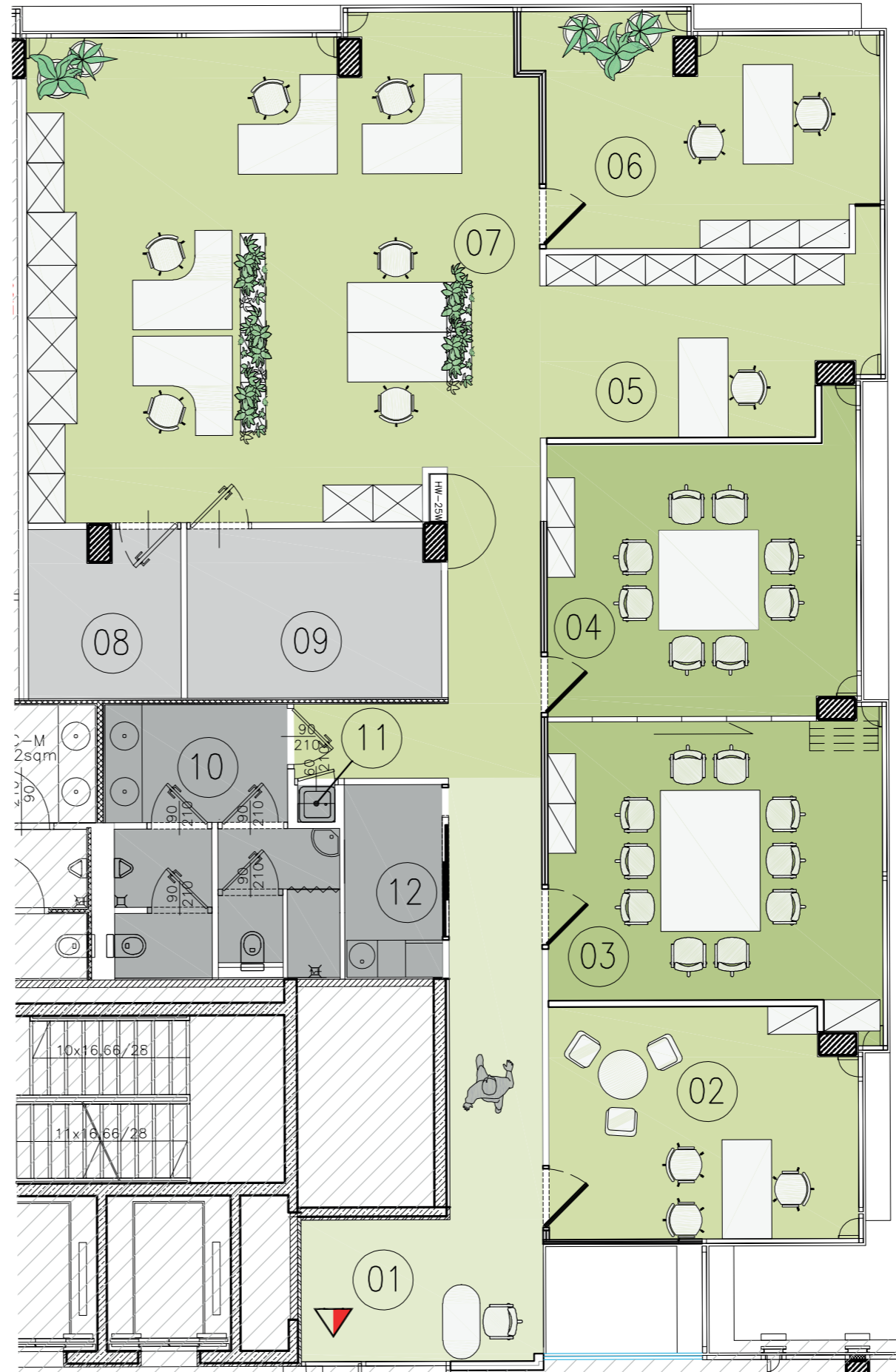
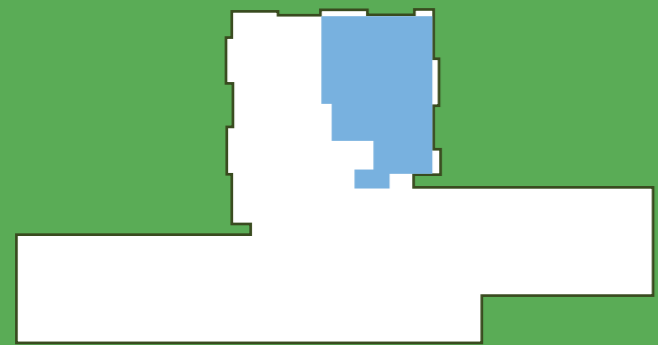
Available from 2.10.2025

250 M²

Total area gross

238,1 M²

Total area net



PLATINIUM 2

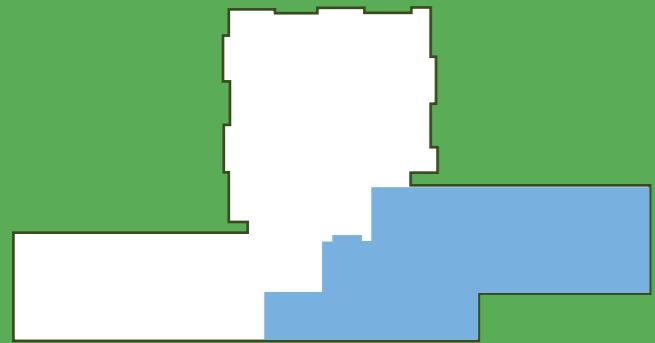
FLOOR 3

574,3 M²

Total area gross

547 M²

Total area net



PLATINIUM 3

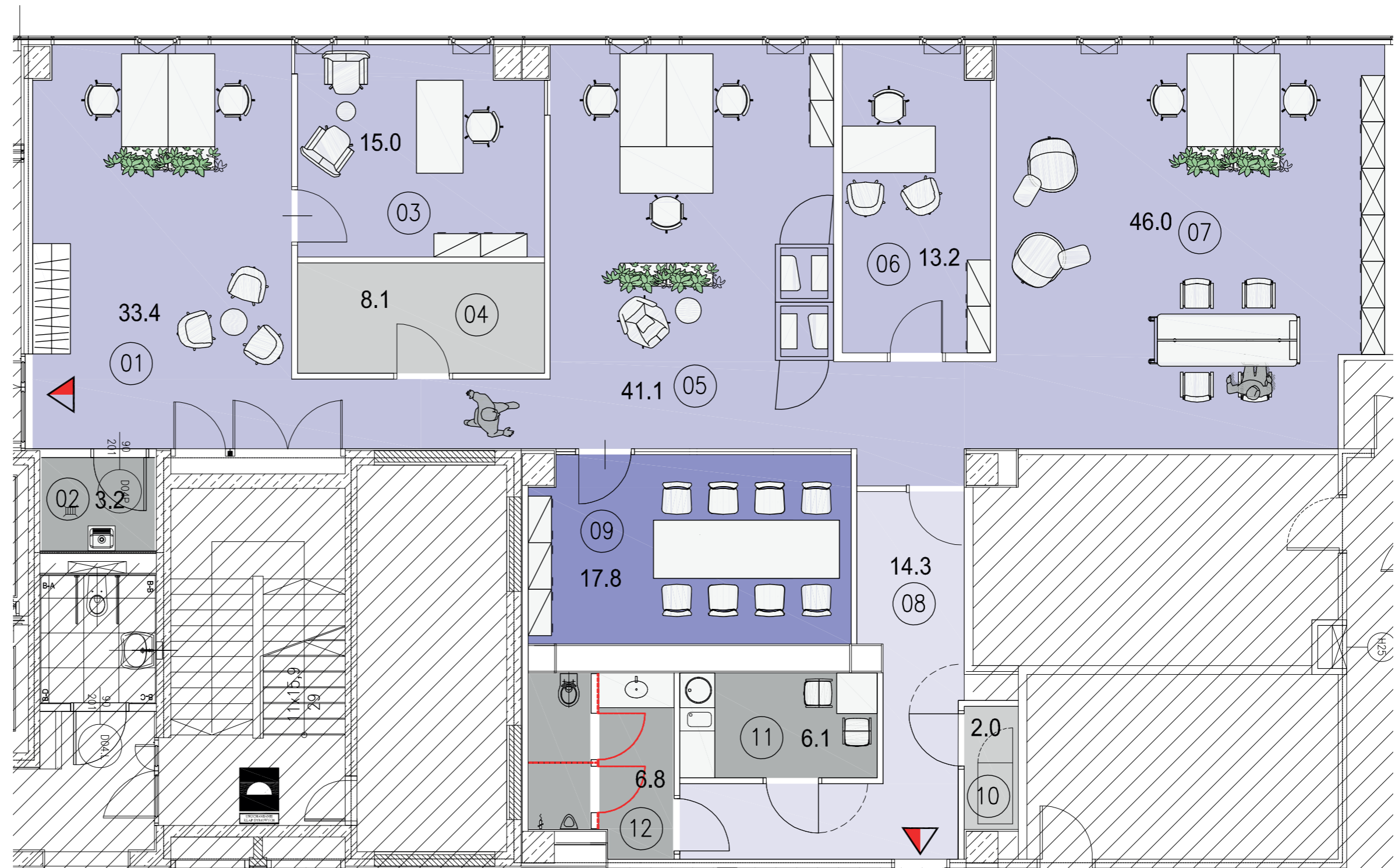
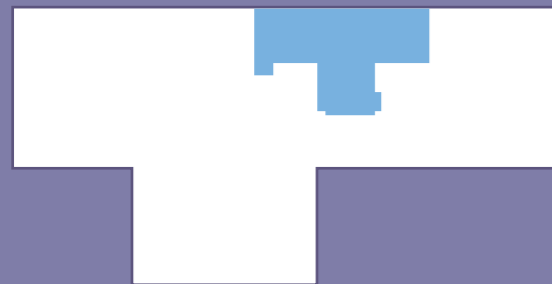
GF

229 M²

Total area gross

218,1 M²

Total area net



PLATINIUM 3

FLOOR 1

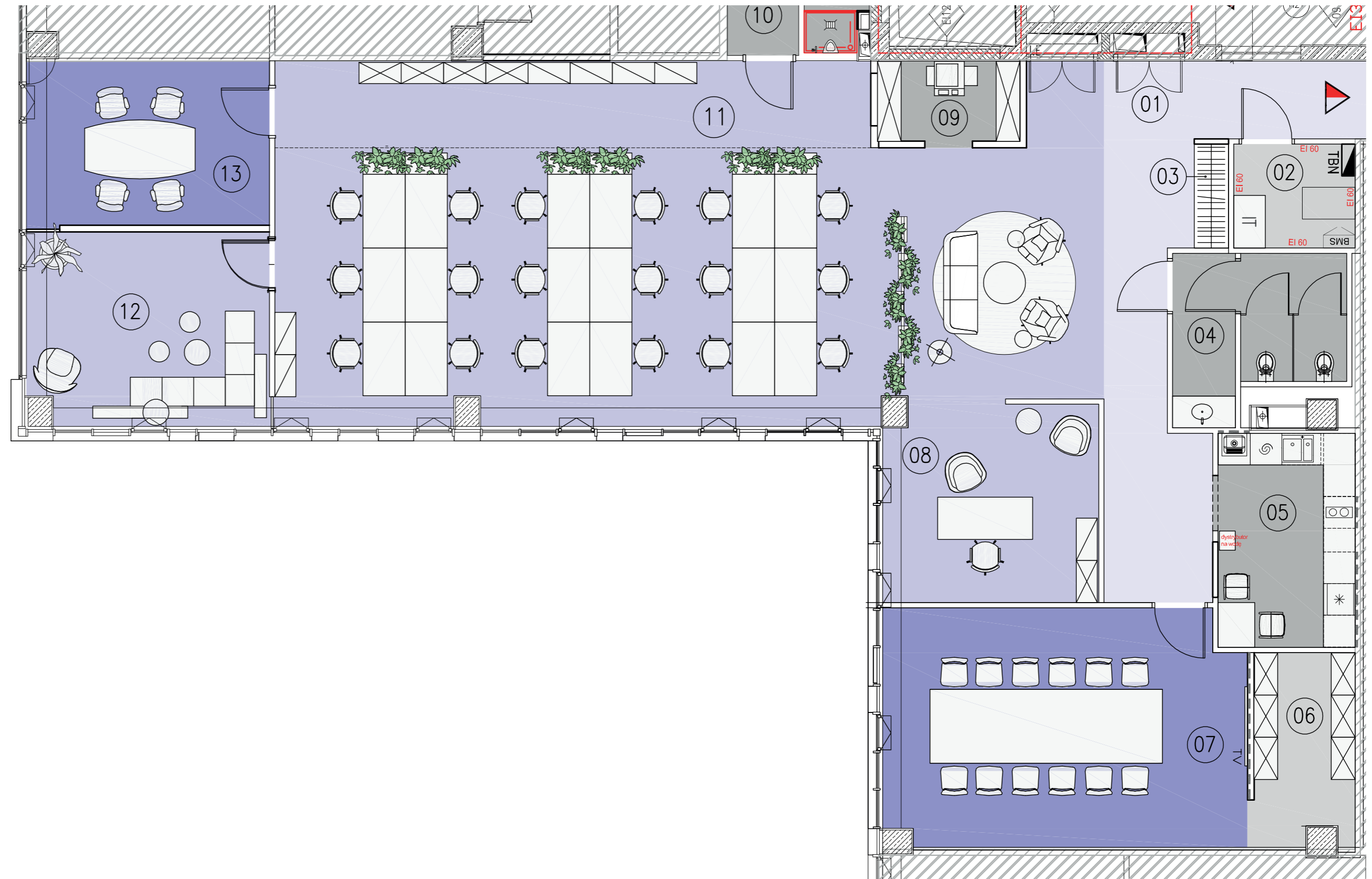
Available from 10.01.2026

276,9 M²

Total area gross

263,7M²

Total area net



PLATINIUM

PLATINIUM 3

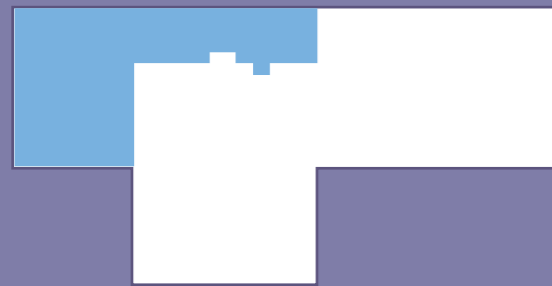
FLOOR 2

538,2 M²

Total area gross

512,5 M²

Total area net

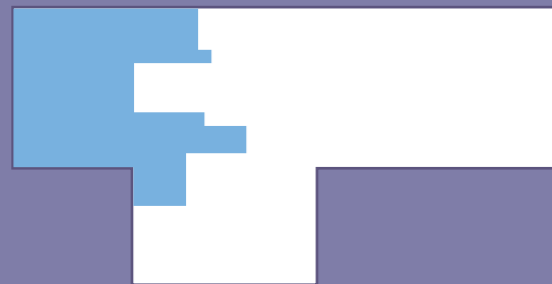


PLATINIUM

PLATINIUM 3 FLOOR 3

553,3 M²
Total area gross

527 M²
Total area net



PLATINIUM 3

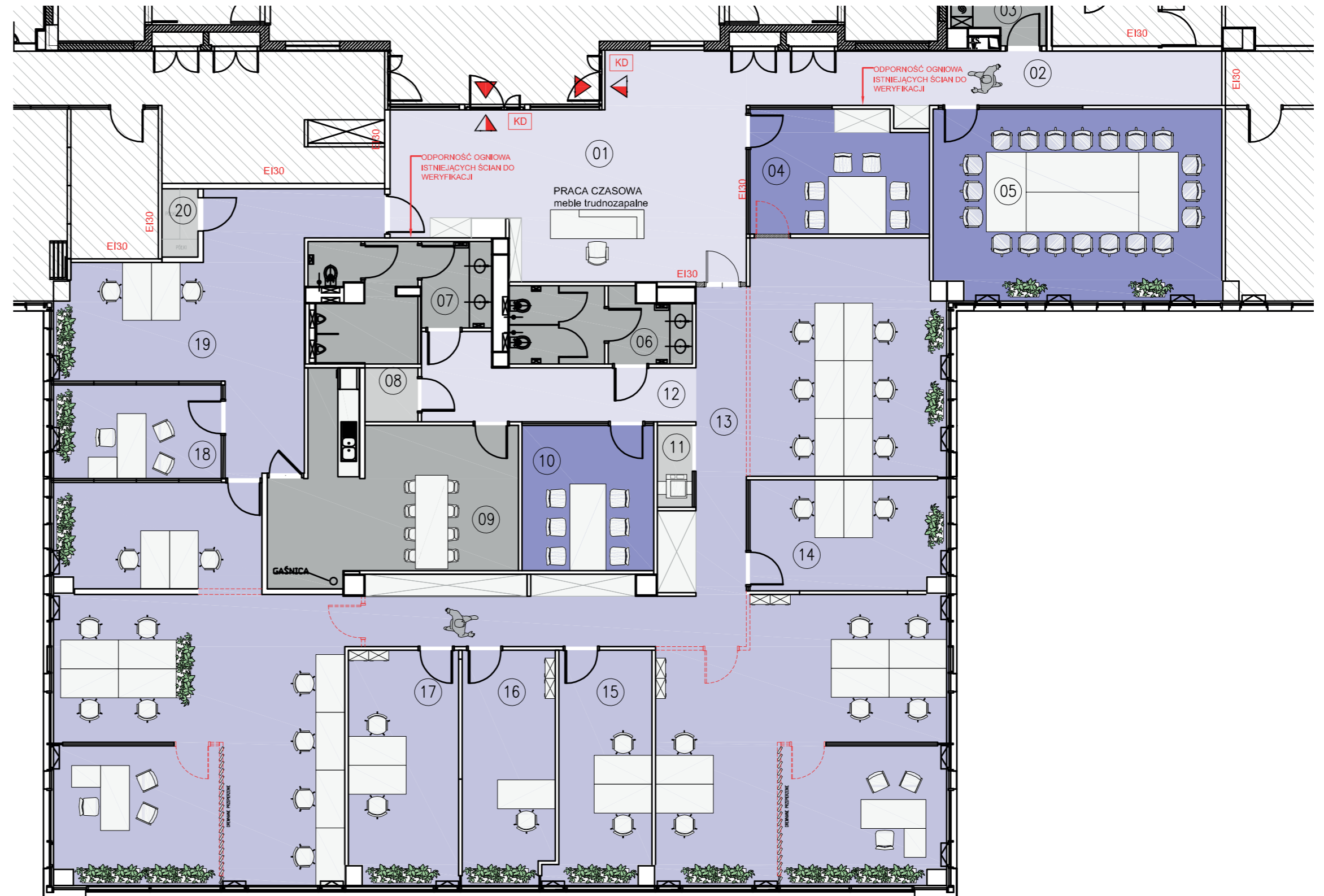
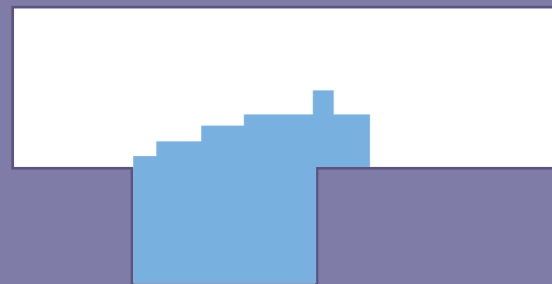
FLOOR 4

609,6 M²

Total area gross

580,5 M²

Total area net



PLATINIUM

PLATINIUM 3

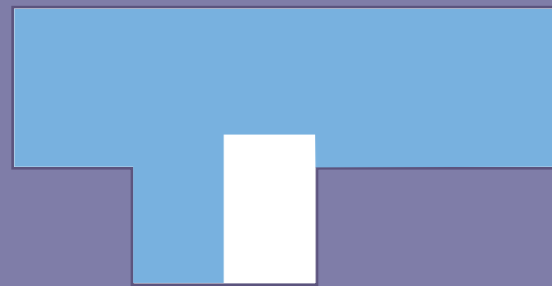
FLOOR 5

1390,3 M²

Total area gross

1324,2 M²

Total area net



PLATINIUM

PLATINIUM 4

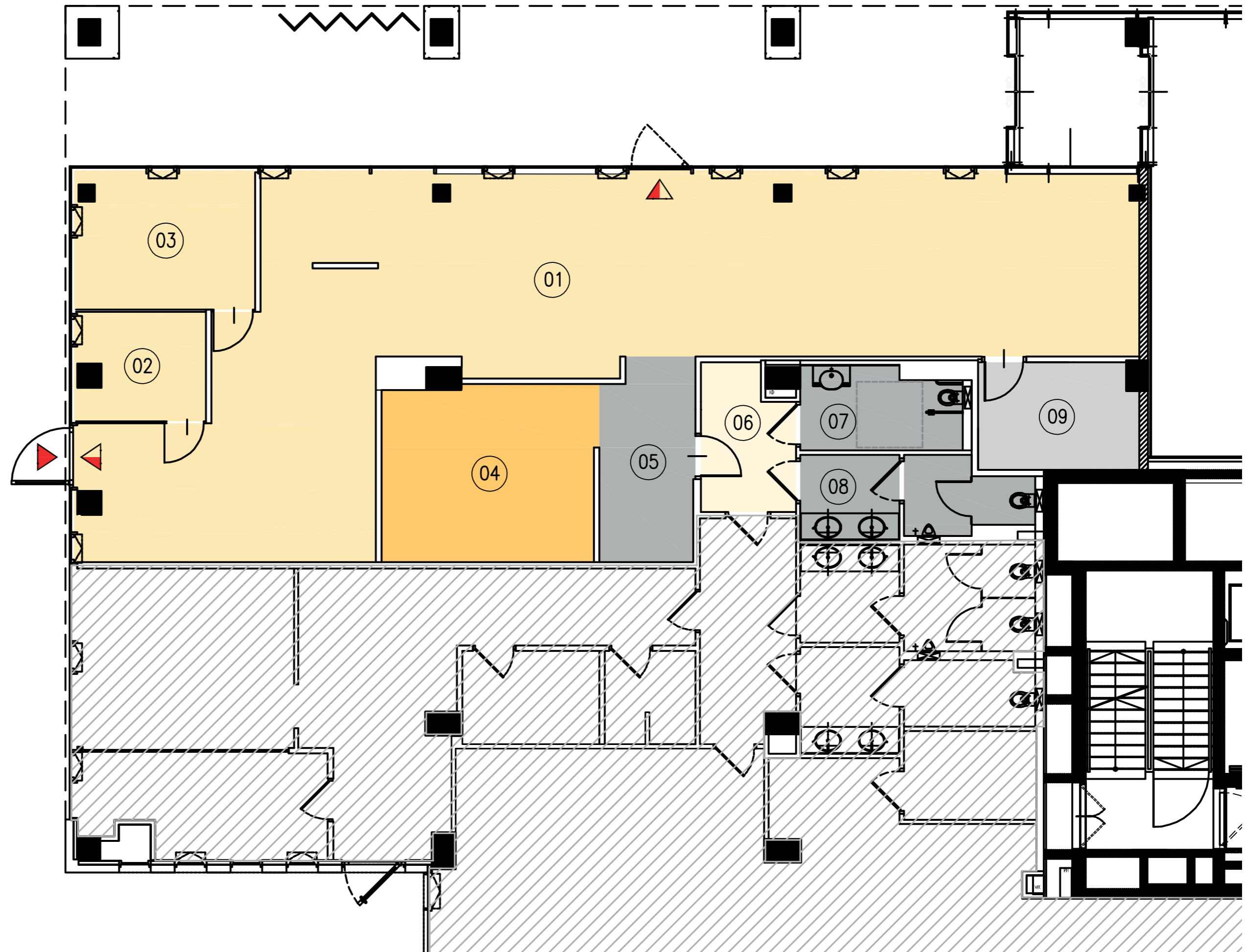
GF

208,9 M²

Total area gross

199 M²

Total area net



PLATINIUM

PLATINIUM 4

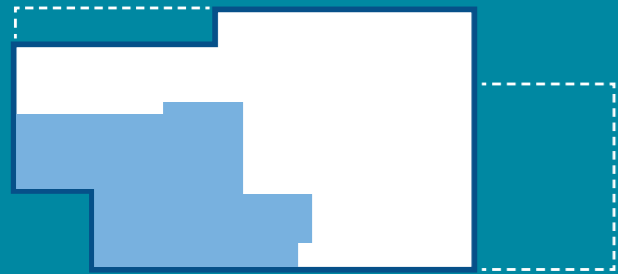
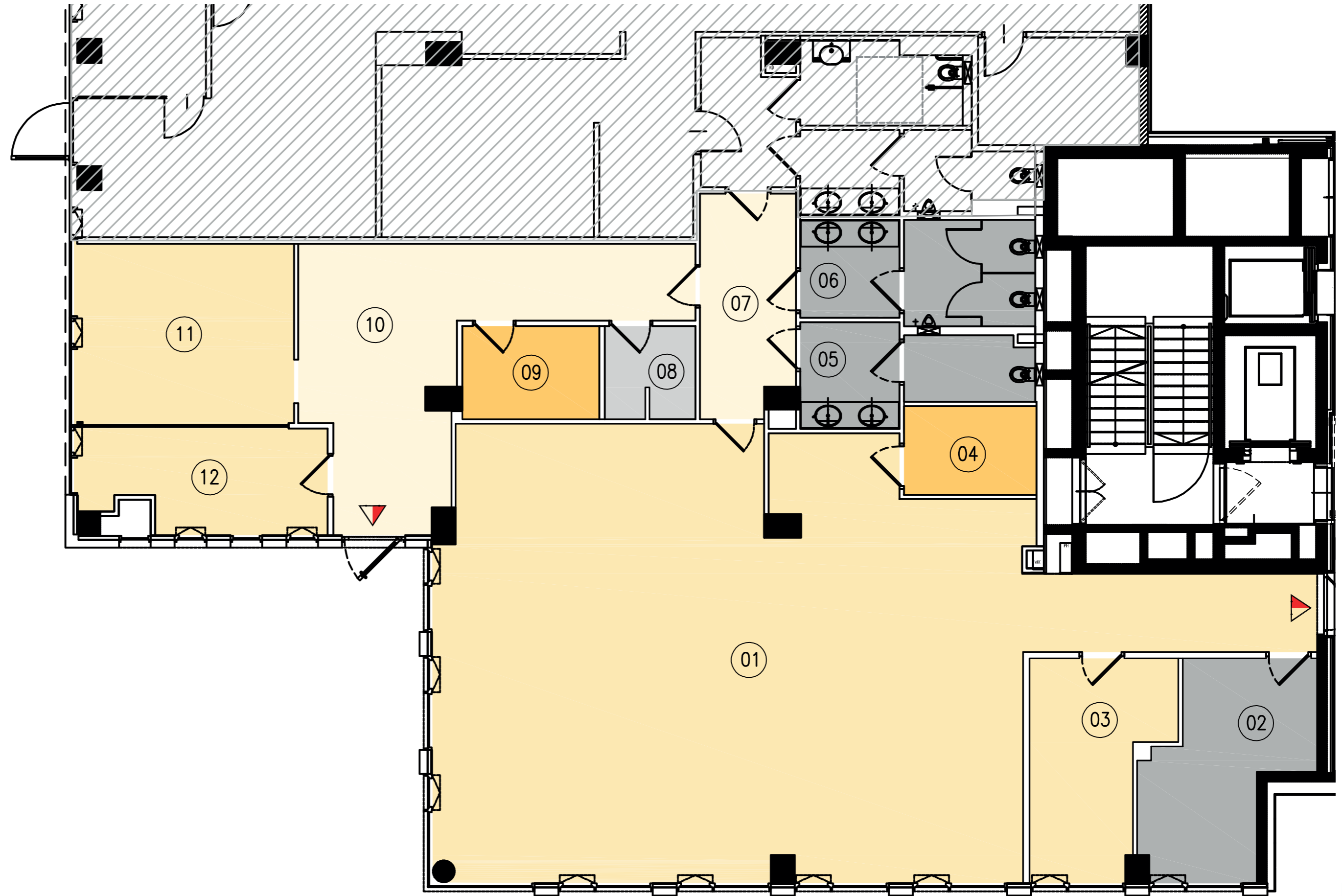
GF

314,4 M²

Total area gross

299 M²

Total area net

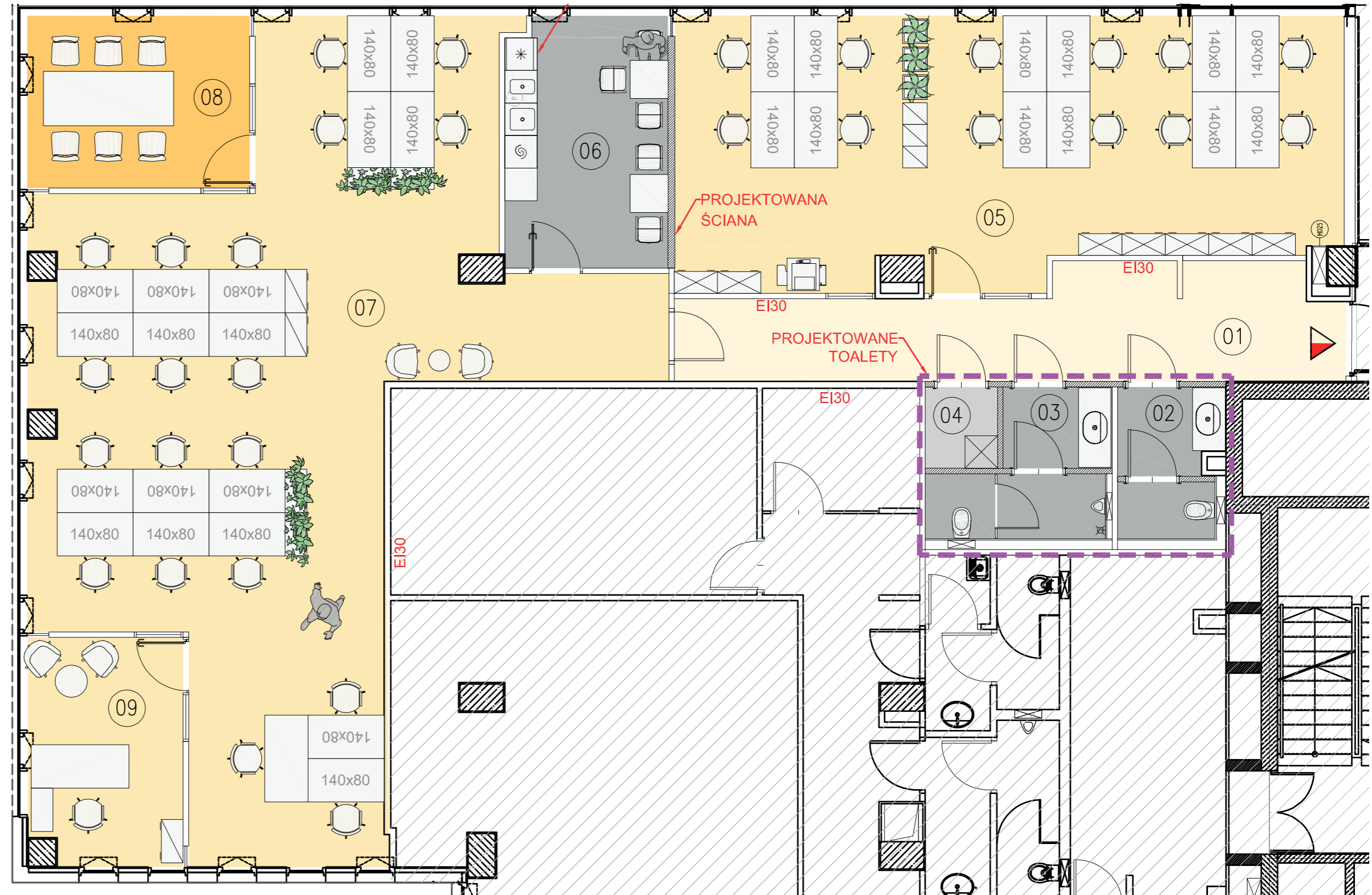


PLATINIUM

PLATINIUM 4 FLOOR 1

238,3 M²
Total area gross

227 M²
Total area net

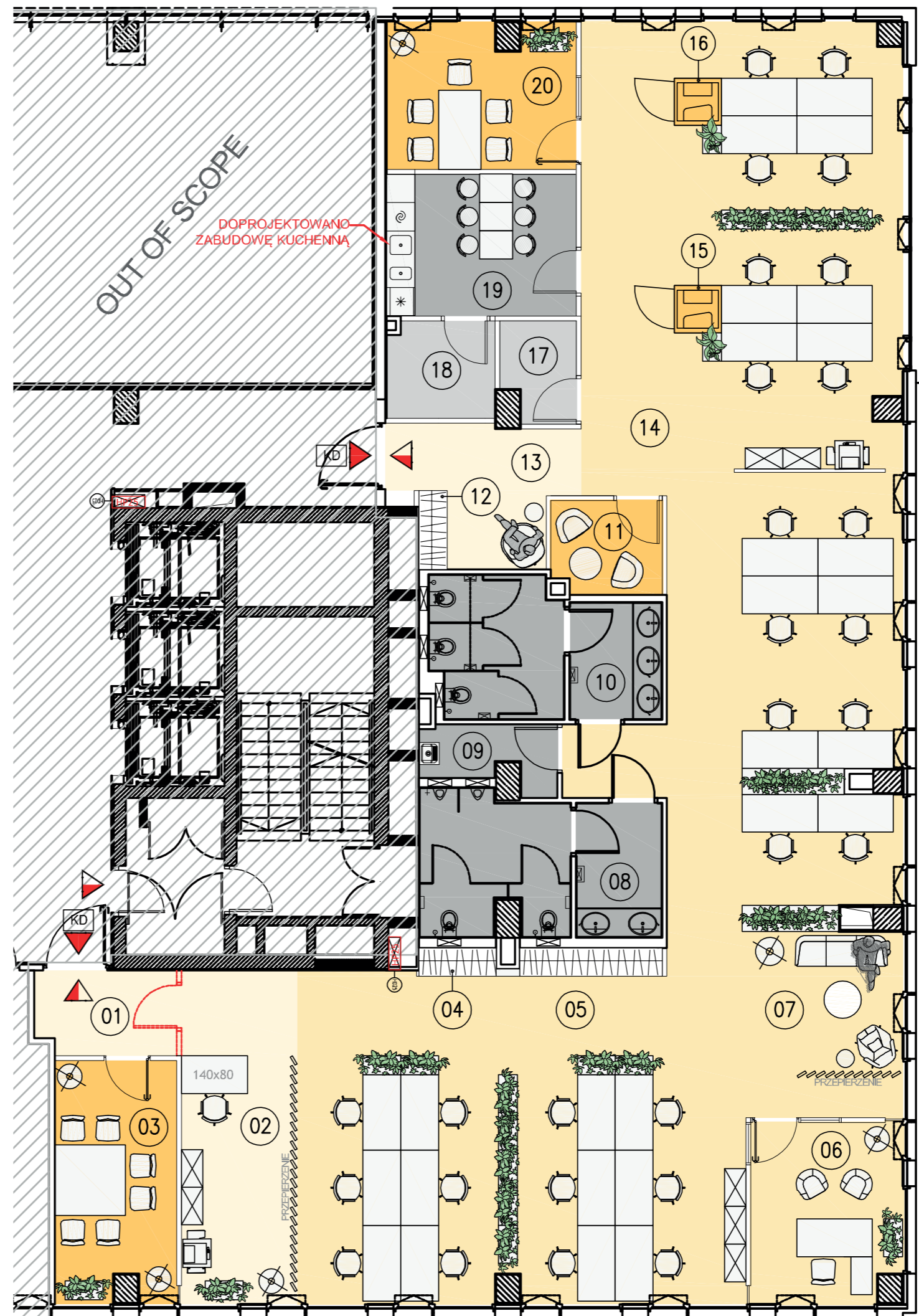


PLATINIUM 4

FLOOR 1

358,9 M²
Total area gross

341,9 M²
Total area net



PLATINIUM 4

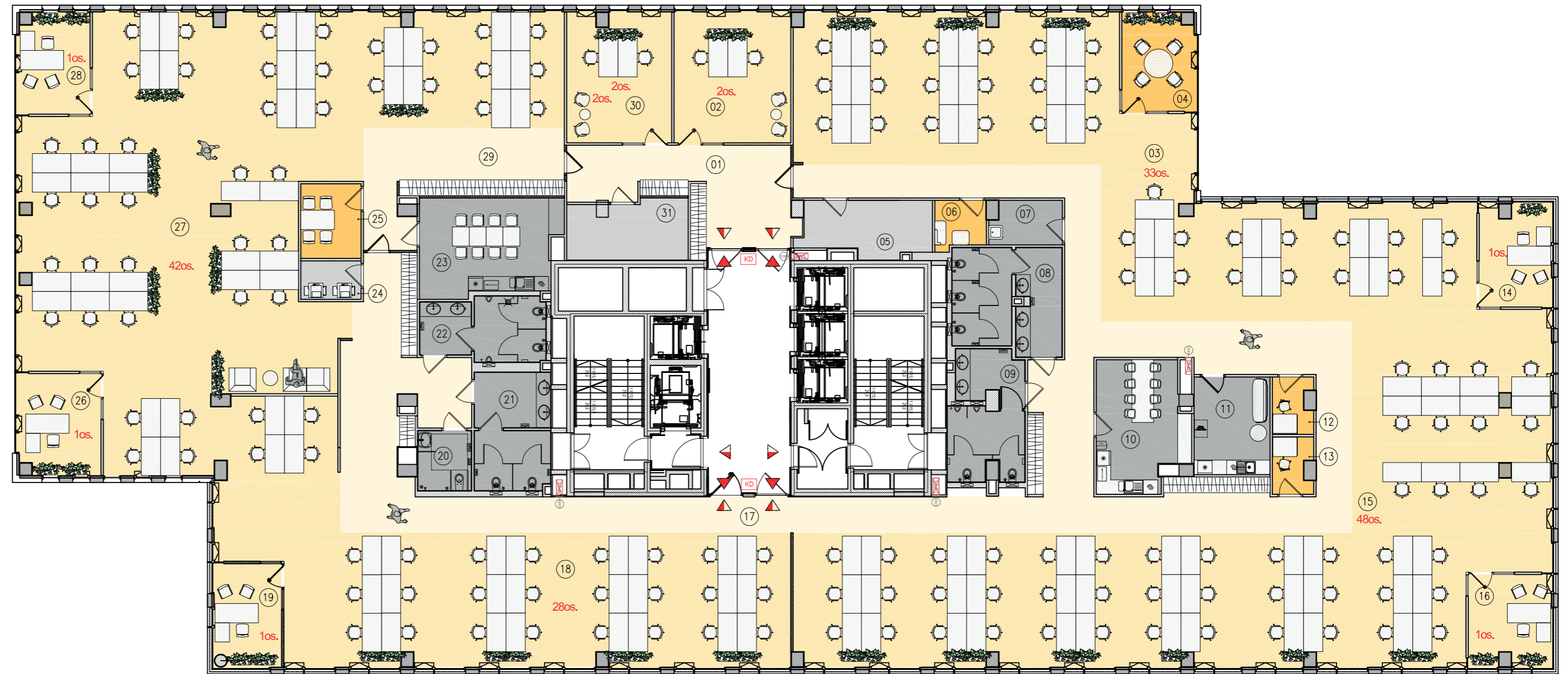
FLOOR 2

1468,1 M²

Total area gross

1394,2 M²

Total area net



PLATINIUM

PLATINIUM 4

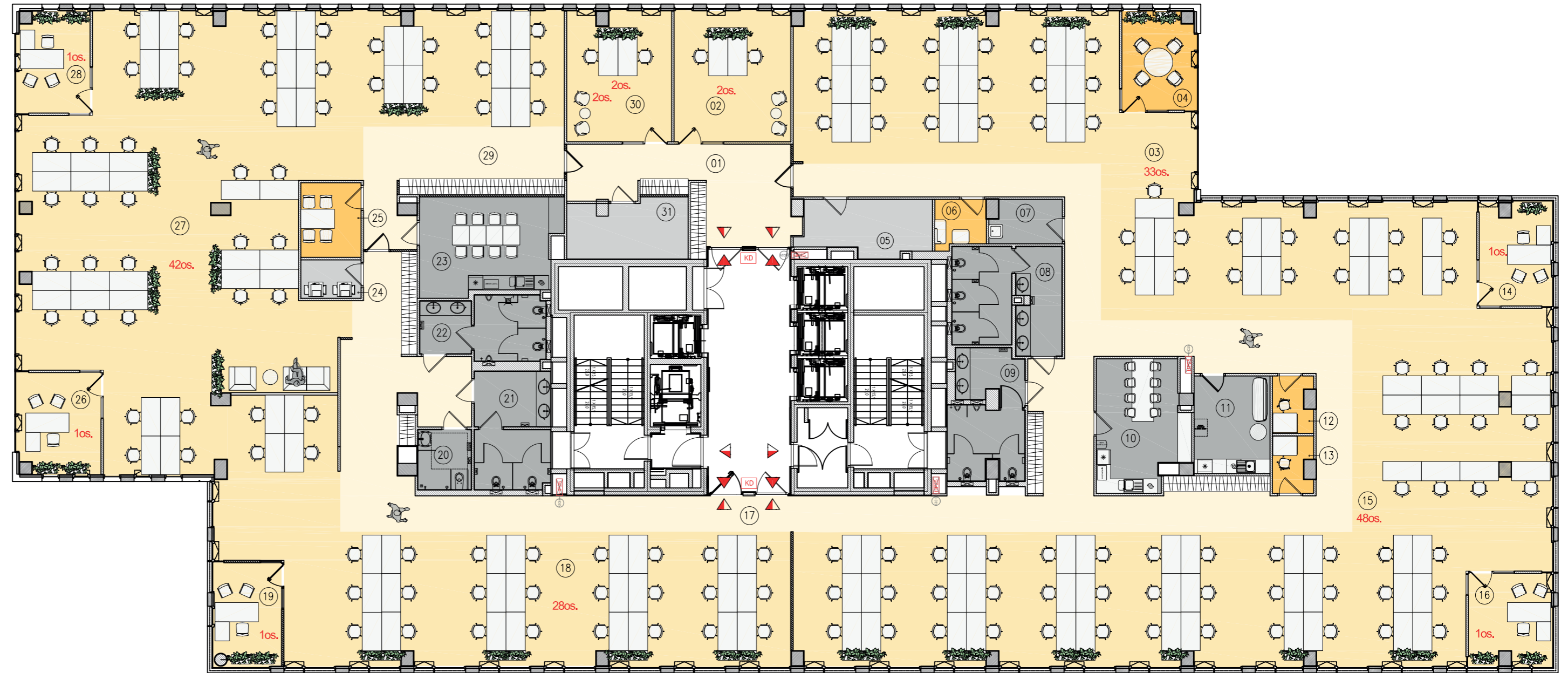
FLOOR 3

1468,7 M²

Total area gross

1394,7 M²

Total area net



PLATINIUM 5

GF

228,6 M²

Total area gross

217,8 M²

Total area net



PLATINIUM

PLATINIUM 5

FLOOR 1

335,7 M²

Total area gross

324 M²

Total area net

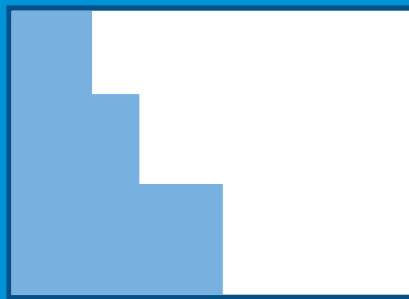


PLATINIUM

PLATINIUM 5 FLOOR 4

477,2 M²
Total area gross

462 M²
Total area net



PLATINIUM



PLATINIUM

54,880 SQM

Total area



LEED Certification

1/68 SQM

Parking ratio

GENERAL INFORMATION

BUILDING	YEAR OF CONSTRUCTION	TOTAL GLA (m ²)	NUMBER OF FLOORS
Platinum I	2007	9,914	7
Platinum II	2008	9,402	7
Platinum III	2010	11,586	7
Platinum IV	2011	12,934	12
Platinum V	2012	10,934	12

Technical Specifications

- > Openable Windows
- > Office Height (2,7 m)
- > HVAC 4-pipe fan coils
- > Floor Load Capacity (2,5-3,5 kN/m²)
- > Raised Floor
- > Suspended Ceilings
- > CCTV in common areas
- > BMS
- > Deepki System
- > Waste Tracker
- > Solar Films

General Lease Terms

- > Base Office Rent 14,50-14,75 €/m²
- > Min.lease term 3 years
- > Parking Ratio 1/68
- > Base parking Rent 95 €
- > Service Charge 24,00-31,50 PLN/m²
- > Add-on factor 5%